



WINTER 2011 DANIELS ELECTRONICS NEWSLETTER

If you are experiencing difficulty viewing this email, please go to the [Daniels Newsletters Page](#).

Daniels celebrates its 60th anniversary

In This Issue:

[DANIELS CELEBRATES 60TH ANNIVERSARY](#)

[CUSTOMER PROFILE: TORONTO TRANSIT COMMISSION](#)

[PRODUCT UPDATES](#)

[UPCOMING EVENTS](#)

[UPCOMING TECHNICAL TRAINING COURSES](#)

[PRESIDENT'S DESK](#)

On December 17, 2010, the Daniels family, staff and friends gathered for a celebratory Christmas party commemorating the incorporation of the company 60 years ago. Daniels Electronics was officially incorporated on December 9th, 1950.



Terry and Ron Daniels were on hand to cut the 60th anniversary cake and enjoy a bit of nostalgia as a slide show of the past 60 years was shown during the course of the evening.



43 Erie Street
Victoria, BC
Canada, V8V 1P8

Ph: (250) 382-8268
Fax: (250) 382-6139

Toll Free
Canada & USA:
Ph: 1-800-664-4066
Fax: 1-877-750-0004
www.danelec.com



To read more about the history of Daniels electronics visit the history page of our website <http://www.danelec.com/company/history/>. If you would like to send a congratulatory message to Terry and Ron Daniels please address your comments to editor@danelec.com. Here's to the next 60!

[Back to Top](#)

Customer Profile - Toronto Transit Commission

The Toronto Transit Commission (TTC) is the third largest public transit system in North America, moving 1.5 million riders every day in the Greater Toronto Area. TTC has a network of 700 subway cars, 250 streetcars, 1,800 buses, and a fleet of specialized service Wheel-Trans for people who require accessible transportation.



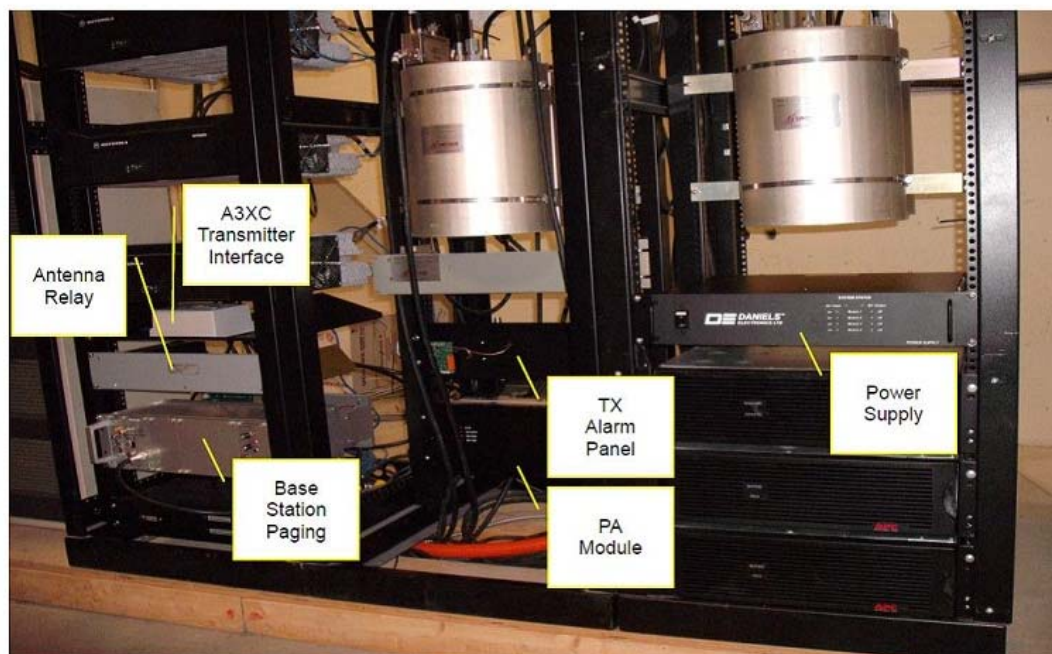
Through Multitone Wireless (Canada), Daniels Electronics authorized dealer in the Toronto region, TTC now has a comprehensive paging system operating from the top of the CN Tower (1,815'). The paging system provides paging coverage anywhere in metro Toronto for all TTC staff, ensuring timely alerts for daily operations or in response to emergencies. All TTC vehicles and staff are equipped with pagers and can be alerted individually for routine maintenance and operational activity or for large scale responses in an emergency. TTC use the system to build individual response teams for each activity whether it is a maintenance callout for a station or a large scale emergency such as a vehicle accident or fire. According to Ed Heffernan, General Manager with Multitone Wireless (Canada), "We offered the TTC the ability to do group pages but they prefer to use individual pages for each and every incident to ensure the response team is customized to the incident. They are very happy with their new system and it is meeting their needs."



Multitone Wireless (Canada) installed the system during the summer of 2009 and it includes a 100 watt paging transmitter, Multitone Mark VI and Mark VII paging encoders as well as filters, power supplies and alarms as shown in the installation photo below. An identical backup site is located in mid Toronto. The system has been operational 24/7 since its installation and is meeting the customer requirements. The complete installation atop the CN tower is shown below.

The CN Tower in Toronto is a communications and observation tower standing 1,815 ft tall. It was completed in 1976 becoming the tallest free-standing structure until it was surpassed in 2007 by Burj Khalifa in Dubai.

Toronto Transit Commission Transmission Site CN Tower Toronto



Newsletter Feedback

If you wish to unsubscribe from our newsletter, please email the editor@danelec.com.

Comments on desired enhancements or additions are welcome and can be forwarded to the editor@danelec.com.

Compliance Assessment Program (CAP) and SDoCs

Daniels Electronics has posted test results and Supplier's Declaration of Compliance (SDoCs) documents to the US Department of Homeland Security Responder's Knowledge Base. The following units now have their Supplier's Declaration of Conformance (SDoC) published to the DHS website URL: <https://www.rkb.us/search.cfm?query=&action=5&typeid=5>

- MT-4E TX 700 MHz
- MT-4E TX 800 MHz
- MT-4E RX 800 MHz
- MT-4E TX UHF
- MT-4E RX UHF

The Publication of the SDoCs (Supplier's Declaration of Compliance) for Daniels MT-4E P25 radios encompasses base station, repeater and transportable repeater configurations for the UHF, 700 and 800 MHz bands with VHF to follow shortly. These declarations provide emergency response agencies with confirmation that the Daniels P25 infrastructure equipment has been tested in accordance with the Telecommunications Industry Association (TIA) P25 standards.

New Frequency Bands - 380, 430 and 700 & 800 MHz

Daniels Electronics is now offering versions of its MT-4E radios operating in the following frequency bands:

- 380 - 406 MHz Band Military Band for P25
- 430 - 450 MHz Band Amateur Radio Band
- 768 - 806 MHz Band FCC Identifier – H4JUT – 4E850
- 806 - 869 MHz Band FCC Identifier – H4JUT – 4E850



The MT-4E radio is a high performance, low current FM radio capable of P25 digital or analog operation in 12.5 kHz channels. P25 operation is supported via a purchasable P25 firmware option and secure mode operation is available via optional encryption modules. For full details visit the Daniels website: <http://www.danelec.com/products/rfmodules/> The MT-4E modules provide:

- Software programmable
- 8 Watt RF output – 430 MHz, 6 Watts - 380 MHz & 3 Watts - 700 & 800 MHz
- USB plug for programming and firmware upgrades
- Purchasable firmware upgrade from analog to P25 digital now or in the future
- Used for Repeater or Base Station applications
- Optional AES or DES compliant encryption modules

**New Firmware Release**


This month Daniels will be releasing the latest firmware load for the MT-4E transmitter and receiver. Including in the firmware functionality will be a power save feature to reduce the transmitter current drain by 30 mA. This is accomplished by powering down the transmitter in idle state. To access the latest firmware load please visit the Daniel software download page on our website <http://www.danelec.com/products/softwaredownloads/> or contact Daniels service department service@danelec.com

Daniels in conjunction with its regional sales representatives and authorized dealers will be participating at the upcoming industry events in 2011:

Dates	Logo	Tradeshow	Location	Web
Feb 7-9		APCO Western States	Ontario, California	http://www.cpra.org/2011apcowrc.htm
Feb 21-23		APCO Australia	Melbourne	http://www.cvent.com/EVENTS/Info/Summary.aspx?e=241b5b85-cd82-43f6-8972-45384e337f97
Mar 9-11		IWCE	Las Vegas, Nevada	http://www.iwceexpo.com/iwce2011/public/enter.aspx
Mar 15 -17		Global Paging Summit	Cork, Ireland	http://www.pagingcarriers.org/2005wc/wireless_forum.asp
Mar 21-26		Fire Department Instructors Conference	Indianapolis, Indiana	http://www.fdic.com/index.html
Apr 28		Power to Purchase	Austin, Texas	http://www2.dir.state.tx.us/about/calendar/Pages/PowerToPurchase2011.aspx
May 10-13		UTC Telecom	Long Beach, California	http://utctelecom2011.utc.org/
June 1-2		CANSEC	Ottawa, Ontario	https://www.defenceandsecurity.ca/index.php?action=cms.goCansec
June 14-16		AAPC	Nashville, TN	http://www.pagingcarriers.org/2005wc/wireless_forum.asp
June 21-24		CommunicAsia	Singapore	http://www.communicasia.com/

Free Exhibit Pass to IWCE

Daniels Electronics invites you to visit us at IWCE in Las Vegas on March 9-11. We will be exhibiting in booth # 8027. Below we have provided you with a complimentary pass.



**Converge.
Collaborate.
Communicate.**

iwceexpo.com
INTERNATIONAL WIRELESS COMMUNICATIONS EXPO

Please complete all questions. Incomplete forms cannot be processed.
Trade only. Must be 18 to attend.


Step 1: 3 Ways to Register

ONLINE: www.iwceexpo.com (click the "register" tab to register as an attendee and use customer code V5)
FAX: 708-344-4444
MAIL: CSI/WVCE 2011 Registration • PO Box 624 • Brookfield, IL 60513-0624
 Questions? Contact IWCE Customer Service at 800-927-5007 or
 from outside the US, 708-486-0764, 8:30am-5:00pm (CST), or iwce@compusystems.com

Step 2: Contact Information

FIRST NAME _____ LAST NAME _____
 TITLE _____ AGENCY/COMPANY _____
 ADDRESS _____
 CITY _____ STATE _____
 ZIP _____ COUNTRY _____
 PHONE _____ CELL PHONE* _____
 FAX** _____ E-MAIL** _____

*By providing my cell number, I am giving IWCE 2011 and its exhibitors/sponsors permission to contact me via cell or text regarding registration, emergency situations, updates and promotional materials
 **By providing my fax and/or email address, I grant Penton Media permission to contact me via email and/or fax regarding my registration as well as to receive updates on IWCE and/or updates and promotional materials from IWCE sponsors and exhibitors and associated Penton publications.

Please check here if you require special services:  Customer Code: V5

Step 3: Profile Information

1. Yes, I wish to receive/continue to receive Urgent Communications. No

2. How would you like to receive your copy of Urgent Communications? (If you want to receive the digital version of the magazine, we must have your email address.)
 Digital Print

3. I am employed by: (check only one)
 Government
 FD Federal Government
 AE State/Local Government
 PU Public Utilities (gas, electric, water, phone, cable)
 FT Public Transportation
 Public Safety
 AA Law Enforcement Agency
 AM Fire Department
 AC Emergency Medical Services
 SC Private Security
 Business/Industry/Institution
 EB1 Private Office
 EB2 Other Motor Freight/Fleet Services
 EB3 Airlines/Airport
 EB4 Security
 EB5 Construction
 EB6 Manufacturing
 EB7 Building & Facilities Management
 EB8 Education
 EB9 Retail
 EB10 Travel/Hospitality
 EB11 Hospital/Medical Facilities
 EB12 Event Mgmt./Service Companies
 and/or... _____

Product Distribution
 AF Mobile Radio Dealer and/or Service Shop
 AN Manufacturer of Communications Equipment
 AP Manufacturer's Rep/Distributor of Communications Equipment
 AW Communications Software & Network Equipment
 AT Systems Integrator
 AI Other Communications-related Equipment
 Network Service Provider
 AR Communications Support Operator
 AH Specialized Mobile Radio Operator
 AJ Paging System Operator
 AK Cellular PCS Provider
 AL Satellite & Other Networks
 Professional Services
 AT Engineering/Consulting
 AP Production*
 (P) Association/Publisher (non-edited)
 *Please include phone and e-mail address. Other (please specify) _____

4. What is your job function? (check only one)
 BA Corporate (President, Owner, CEO, VP, Partner, General Manager)
 BE Operations and Administration (Director, Manager, Administrator)
 BC Technical and Engineering (VP, Director, Manager, Technician, Specialist, Supervisor and Administrator of Engineering/Technical Support, and Quality Control)
 BD Sales/Marketing
 BO Other (please specify) _____

5. What are your interests?
 CB Two-way Radio
 CC Paging/Messaging
 CE Cellular/PCS
 CF Mobile Data
 CG Location Technologies
 CH GPS/GIS/Mapping
 CI SCADA/Telemetry
 CJ Tower/Site Equipment
 CK Antennas & Batteries
 CL Dispatch Communications Equip.
 CM Test Equipment
 CN Headsets/Wigwags/Accessories
 CO Microwave Equipment
 CP Tracking Equipment
 CQ Engineering/Consulting Services
 CR Wireless Broadband
 CS Amplifiers/Repeaters
 CT Satellite
 CU Surveillance Equipment
 CV Software
 CW GSM, LTE and 4G
 CX Wireless Backhaul
 CY 802.11/WiFi
 CZ RFID
 CA RFP/RFID
 CB DCS/Co-Building
 CC Other (please specify) _____

6. What best describes your purchasing role? (check only one)
 BA Make final decision to purchase
 BB Recommend/specify purchases
 BC Have no part in specifying or buying

Exhibit Hall Guest Pass

Convergent Communications Spoken Here



**Converge.
Collaborate.
Communicate.**

iwceexpo.com
INTERNATIONAL WIRELESS COMMUNICATIONS EXPO

College of Technology March 7-8, 2011
 Exhibits and Conference March 9-11, 2011
 Las Vegas Convention Center Las Vegas, NV

Your communications network is your lifeline. It is one of the most critical parts of your organization. Make sure you're getting the most out of it by attending IWCE 2011.

If You Are:

- Federal, state and local government
- Law enforcement, fire or other public safety organization
- Utility
- Transportation
- Business/Industry
- Wireless service provider
- Or if you are a dealer, engineer, IT professional or consultant

...and are responsible for the dependability, reliability and interoperability of your organization's convergent communications systems, then **IWCE is your must attend event.** IWCE provides the applications and solutions you need in order to communicate anytime, anywhere.

At IWCE, You Can:

- Attend content rich education and training sessions developed by industry experts
- See 330 exhibitors showcasing the latest in convergent communications technology solutions
- Make new contacts at the IWCE networking functions

Exhibit Hall Hours:
 Wednesday, March 9 10:00am – 5:00pm
 Thursday, March 10 10:00am – 5:00pm
 Friday, March 11 10:00am – 2:00pm

Organized By:

 www.penton.com

Official Publication:

 www.urgentcomm.com

Compliments of:

[Back to Top](#)

Upcoming Technical Training Courses

The Daniels training department has the following training courses planned:

Location
 Daniels Electronics Factory
 43 Erie Street
 Victoria, BC, Canada V8V 1P8

- | | |
|-----------------------------|--|
| February 1st, 2011: | Radio System Basics and RF Fundamentals Course |
| February 2nd and 3rd, 2011: | MT-4E Analog and P25 Digital Radio Systems Course |
| February 8th and 9th, 2011: | MT-3 Analog Radio Systems Course |

Location

Courtyard Marriott Las Vegas South
5845 Dean Martin Dr.
Las Vegas, NV 89118

March 15th, 2011:

Radio System Basics and RF Fundamentals Course

March 16th and 17th, 2011:

MT-4E Analog and P25 Digital Radio Systems Course

Location

U.S.D.A. – Forest Service National University
East Dallas, TX
(Open to all U.S. Forest Service)

April 4th, 5th and 6th, 2011:

MT-3 Analog and MT-4E Analog and P25 Digital Radio

April 11th, 12th and 13th, 2011:

MT-3 Analog and MT-4E Analog and P25 Digital

MT-4E Analog and P25 Digital Radio Systems Course

The course will consist of:

- Introduction to P25 Radio System Technology.
- Discussion of Interface Standards.
- Practical uses of P25 and definitions of P25 terms.
- Overview of the new P25 Conventional Fixed Station Interface Standard.
- Introduction to the New MT-4E Product Line (analog and P25 digital versions).
- Theory of Operation for all Daniels MT-4 radio systems.
- Demonstrations and tuning using Daniels MT-4E digital radio product line.

Course Enrollment also includes a set of Daniels Instruction manuals, Training Guide, training tool kit and some other goodies. Feel free to bring your laptop computer to have the RSS software loaded into it.

Customers may also bring their own Communications Analyzer (IFR 2975 or other), Daniels Radio System and test equipment if it is convenient. It is not necessary, but could allow for more hands-on with your own equipment.

Please contact Daniels Training Section at training@danelec.com or 1-800-664-4066 for more information or to reserve your seat. If you know someone who might be interested in this course please pass this invitation on to them.

Training Videos

Daniels Electronics is constantly looking for new ways of supporting our customers. Recognizing that not everyone is able to attend our training classes, we are developing a series of online training videos as a viable alternative. The link below is to a 5 minute video (hosted on YouTube) we have developed which explains the tuning procedure for the MT-4E receiver RF preselector.
<http://www.danelec.com/support/training/media/>

Home Site map Contact Sales & Government Contracts Dealers 🇪🇸 Find

DE DANIELS™
ELECTRONICS LTD.

Quote P25 Guide Company Applications Products Library Support

Home > Support > Training > Training Videos > MT-4E Receiver RF Preselector Preferred Tuning Method

Training Video: MT-4E Receiver RF Preselector Preferred Tuning Method

This video will describe how to tune the MT-4E Receiver RF Preselector.

Tuning of the RF Preselector 5 cavity helical filter is typically only required when the Analog or Digital Sensitivity or Analog Distortion do not meet published specifications, or when the receiver RF frequency is changed beyond the band pass of the filter (typically 5 - 7 MHz in a VHF or UHF 400 MHz receiver). The UHF 700 MHz and 800 MHz receiver RF Preselector is Full Band, and does not require any tuning.

The RF Preselector may be tuned several different ways. The preferred method is to sweep the RF Preselector using a tracking generator and spectrum analyzer. The alternate method is to tune the RF Preselector for best SINAD response. The alternate method should only be used for single frequency receivers.



[Back to Top](#)

President's Desk

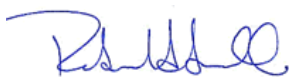
Sitting at the Daniels Christmas party enjoying the celebration of our 60th anniversary and watching the slide show of the past 60 years, I was struck by how much the company has grown and changed over the years. It has been my pleasure and privilege to have worked at Daniels for over half of that time and I am proud of the company, the staff and products we produce to meet your requirements.

During this holiday season all of the staff at Daniels would like to extend to you our best wishes. 2010 has been a record breaking year for us and we thank you for your business and the opportunity to work with you. I trust that during the holidays you had a chance to relax and enjoy time with family and friends before another exciting and challenging year begins.

With IWCE just around the corner we are busy preparing our newest products for launch and looking forward to the opportunity to meet with each of you, to thank you for your business and better understand how we can help you meet your objectives in 2011. We certainly hope you will come by and visit with us at booth 8027 to learn more.

Here's to 60 more years of meeting your needs.

Regards,



Robert Small, President & COO

